

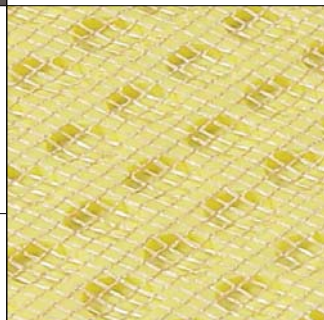
The perfect Solution.

DURAL



DURABASE CI

Versatile matting for decoupling
and sealing tiled floors.



Problems

1. Moisture from above

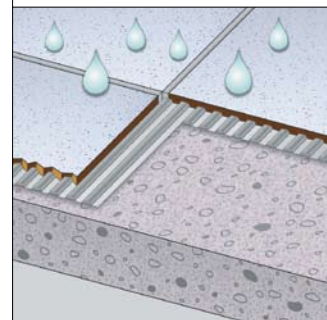
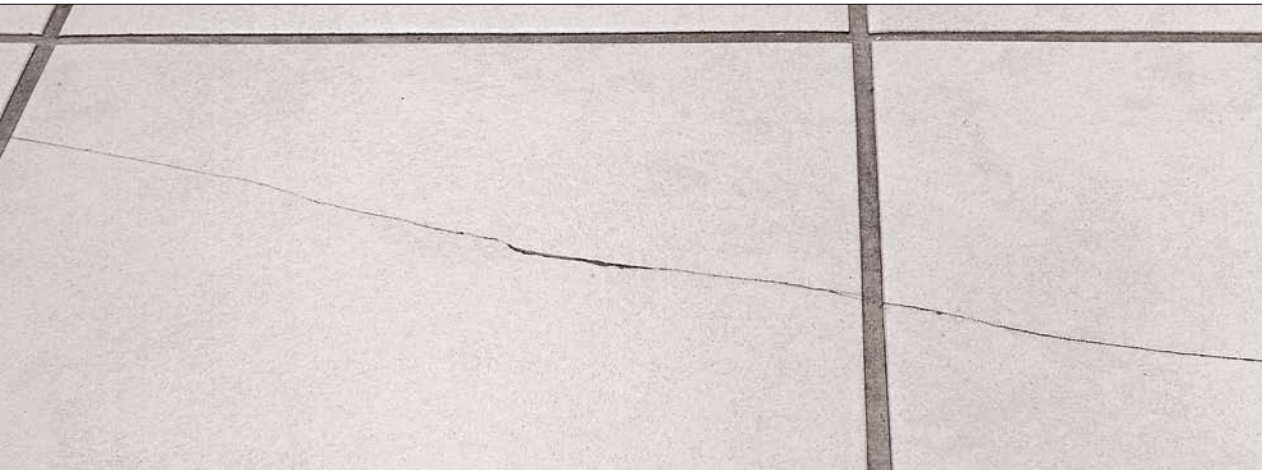
Tiling in itself is not waterproof: Junctions to fittings and walls are particularly susceptible to water seepage which can damage the substrate.

2. Moisture from below

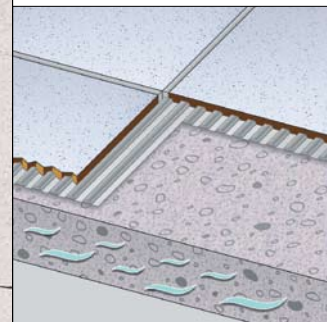
In the case of laying on anhydrite screeds, residual moisture from the screed may accumulate under the tiles and damage the adhesive bond.

3. Substrate stresses

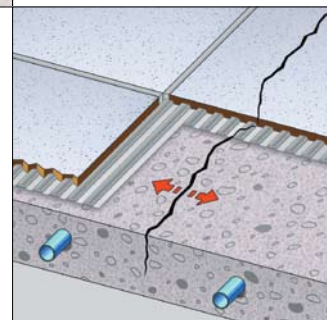
Depending on the structural design and materials used, stresses may develop in tiling substrates which are transferred to the tiling, leading to cracks. In concrete, for example, after a period from six months to several years, deformations due to creep and shrinkage may occur. Cement and heating screeds may also alter after being laid with tiles and slabs. Similarly, chipboard or compressed sheeting may deform if it absorbs moisture.



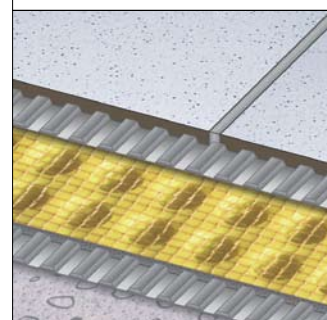
1.



2.



3.



4.

4. Cracks in the substrate

When renovating old timber or tiled floors, cracks may exist in the substrate which make the secure laying of new tiling impossible.

Solutions

DURABASE CI is a tiling mat with an installation height of 3.0 mm. It is made of yellow HDPE (high density polyethylene) and the mat indentations with their laminated grid give it very high rigidity and an optimum bond with thin bed mortar. The material is elastic and resistant to rotting and cannot be damaged by reactive substances and liquids, such as alkalis, solvents or oils. It is also highly impervious to diffusion of water vapour. DURABASE CI bridges cracks, decouples the covering from the substrate and is suitable for achieving sealing in combination with the tile covering.

Product characteristics

DURABASE CI is especially suitable for laying tiles on problem substrates.

Sealing in outdoor areas

Used as a seal, in combination with tiling, on balconies and patios for example, DURABASE CI prevents the entry of water into the structure by seepage.

Sealing in very damp areas

DURABASE CI is also used as a seal, in combination with tiling, in very damp areas, such as changing rooms or swimming pool surroundings.

Crack bridging

Thanks to the matting's crack bridging function, it is also suitable for use in renovation work. For example, CI matting permits the laying of tiles on old, damaged floor coverings (tile on tile). However, it is not possible to compensate for major height differences in the substrate. DURABASE CI is especially suitable for laying tiles on problem substrates.

Laying tiles on timber substrates

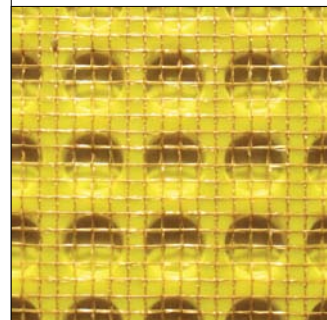
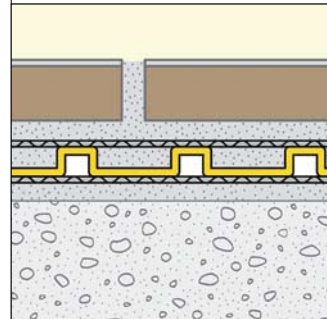
DURABASE CI decouples the covering from the substrate. This makes it possible to lay tiles on substrates which expand and contract, i.e. which react to changes in temperature or humidity with changes in their length. For example, after appropriate preparation, tiles can also be laid with the DURABASE CI mat onto chipboard or timber boarded floors.

Laying tiles on poured tarmac

Even on problem substrates like poured tarmac or related load bearing bituminous compounds, DURABASE CI permits the laying of durable tiling without damage.

Laying tiles on fresh substrates

DURABASE CI permits reverse vapor pressure equalization, making it possible to lay tiles on substrates which are not yet dry. That has proved to be particularly practical for laying on anhydrite floating screed. Without elaborate pre-treatment and special adhesive, tiles can be safely laid on anhydrite screed with a residual moisture content of 2%.



To sum up: DURABASE CI simplifies laying, creates secure substrates and lengthens the useful life of tiled flooring.

Installation



1. Substrate:

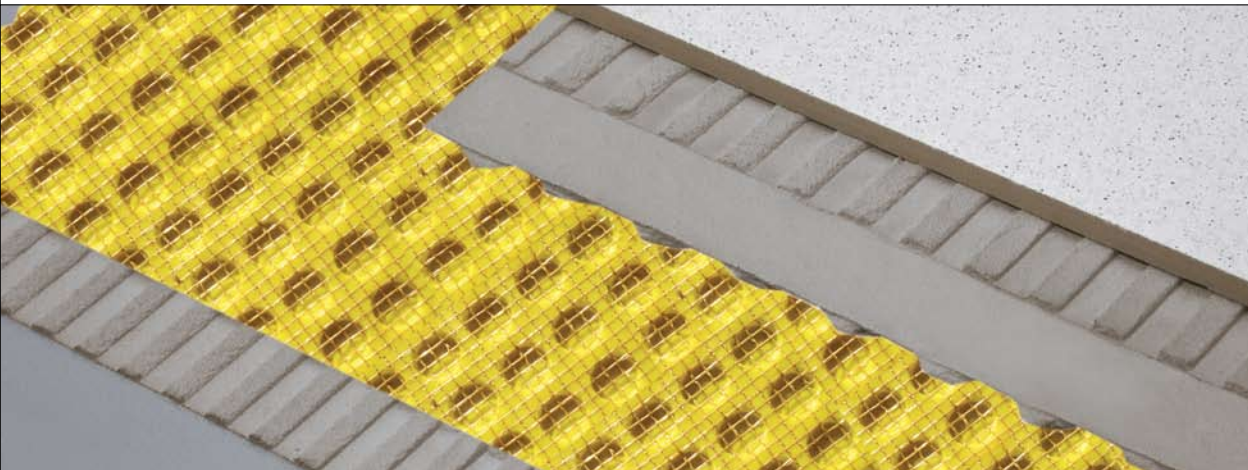
The substrate must be stable, level and free of loose material. Before installation, the DURABASE CI mats are cut to the required dimensions. Thin bed mortar or fluidised bed mortar is applied to the substrate using a 4 x 4 mm serrated trowel. The tile adhesive must be matched to the substrate. Best results are usually achieved with hydraulically bonding thin bed mortar, flex mortar or fluidised bed mortar. Recommendations for ideally matched products can be obtained directly from Dural.

2. Installation:

Then the mats, with their woven carrier fleece facing downwards, are pressed into place and hammered flat. The thin bed mortar must form a strong mechanical bond with the carrier fleece under the DURABASE CI mat. The mats must be laid in the thin bed mortar within the setting time of the adhesive. Access crawl boards should be used to prevent damage to the mats during installation.



1.



2.

3. Joints:

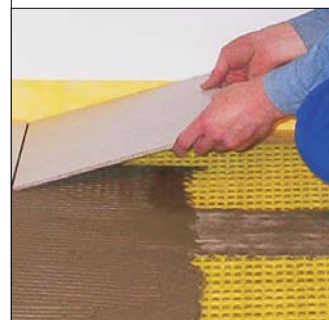
Wall and mat junctions and transitions can be joined with strips of DURABASE WBF or DURABASE WP sealing strip. DURABASE CI mats should be split above expansion joints (large areas of covering should be segmented in compliance with applicable specifications and include expansion joints). Inside and outside corners as well as junctions pipe ends can also be finished with DURABASE WBF corner pieces or sealing collars.



3.

4. Tiles:

After the mat adhesive has hardened, the tiles can be laid directly on the mat using a thin bed process. Here, the general regulations of DIN 18157 must be observed.

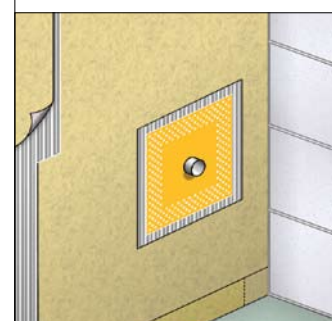


4.

Ancillary products

The DURABASE SYSTEM also features a variety of ancillary products:

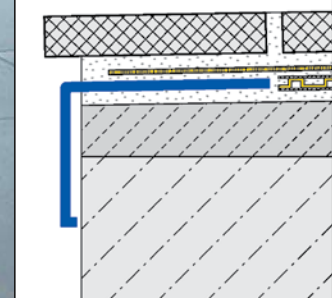
- Pre-moulded inside and outside corners, pipe outlet tiles
- Drain outlet tiles
- Balcony corner pieces
- Sealing tape
- DURAFLEX expansion-joint profiles



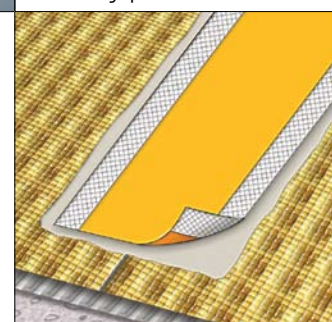
Pipe outlet tiles



DURAFLEX
expansion-joint profiles



Balcony profile

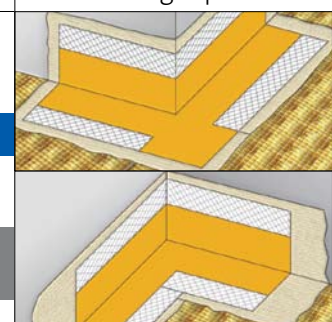


WPF sealing tape

Product data CI/WP sealing tape

Product	Material	Height of material	Width of roll	Length of roll	Colour	Application
CI	*HDPE	3.0 mm	1,000 mm	5/10/25 m	yellow	decoupling/ sealing
WP Sealing		0.15 mm	150 mm	5/25 m	yellow	Sealing strip for CI and WP mats

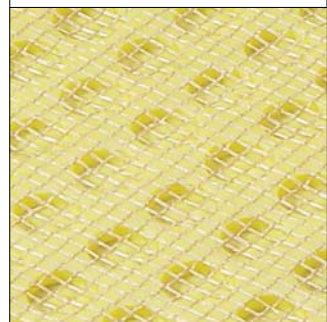
*Polyethylene high density



Outside and
inside corners

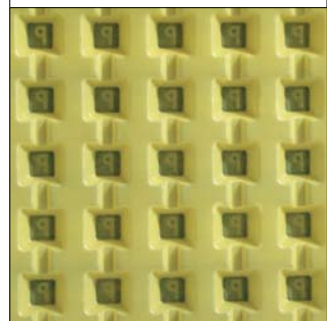
DURABASE CI

Versatile matting
for decoupling
and sealing
tiled floors.



DURABASE DD

Pressure-resistant,
textured foil for
long-lasting
drainage of surfaces.



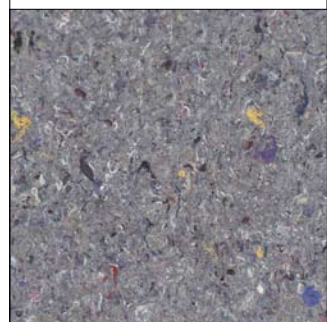
DURABASE WP

Water-resistant
sealing tape for
covering cracks.



DURABASE SW

Ideal matting
for footfall and
heat insulation.



DURAL GmbH & Co. KG

Postfach 1348

D-56403 Montabaur

Tel. +49 (0) 2602/9261-0

Fax +49 (0) 2602/9261-50

welcome@dural.de

www.dural.com